



Top 5 Selling Points

- Be warmly welcomed by local owners
- Short stroll to Botanical Gardens
- 2 min walk to shopping centre, cafes and restaurants
- On site Restaurant and Room service
- Secure onsite parking and Laundry facilities

Deluxe King Rooms

1 x King Bed
Capacity 1-2
people

Deluxe Twin Rooms

1 x King Bed
Capacity 1-2
people

Accessible King Room

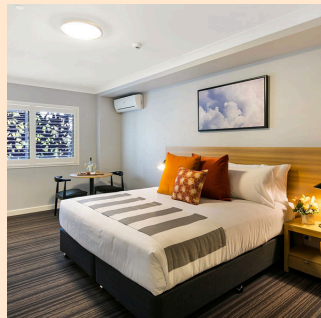
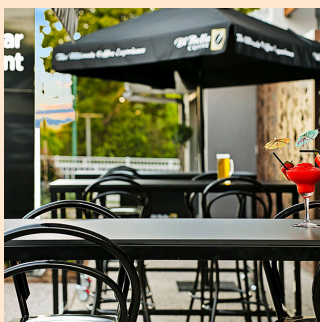
1 x King Bed
Capacity 1-2
people

Executive King

1 x King Bed
Capacity 1-2
people

Two Bedroom Apartment

2 x King Bed
Capacity 1-4
people



25% Rates – Contract Only

All rates are in \$AUD and inclusive of GST. Rates are FIT Travellers per room per night.

All-year-round rates - Validity: 01 Apr 2025 – 31 mar 2026 Min stay: 1 night Block out period: 12 Sep – 27 Sep 2025				RATE PER NIGHT		ADDITIONAL PERSON RATE PER NIGHT	
ROOM TYPE	HOUSE STOCK	ROOM CAPACITY	# RATE CAPACITY	GROSS p/night	NETT p/night	GROSS p/night	NETT p/night
Deluxe King Rooms		3	1-2 people	\$165	\$220	\$30	\$40
Deluxe Twin Rooms		3	1-2 people	\$165	\$220	\$30	\$40
Accessible King Room		3	1-2 people	\$165	\$220	\$30	\$40
Executive King		3	1-2 people	\$172.50	\$230	\$30	\$40
Two Bedroom Apartment		6	1-4 people	\$252.75	\$337	\$30	\$40

Toowoomba Carnival of Flowers season - Validity: 12 sep 2025 – 28 sep 2025 (incl) Min stay: 2 NIGHTS				RATE PER NIGHT		ADDITIONAL PERSON RATE PER NIGHT	
ROOM TYPE	HOUSE STOCK	ROOM CAPACITY	# RATE CAPACITY	GROSS p/night	NETT p/night	GROSS p/night	NETT p/night
Deluxe King Rooms		3	1-2 people	\$165	\$220	\$30	\$40
Deluxe Twin Rooms		3	1-2 people	\$165	\$220	\$30	\$40
Accessible King Room		3	1-2 people	\$165	\$220	\$30	\$40
Executive King		3	1-2 people	\$172.50	\$230	\$30	\$40
Two Bedroom Apartment		6	1-4 people	\$252.75	\$337	\$30	\$40